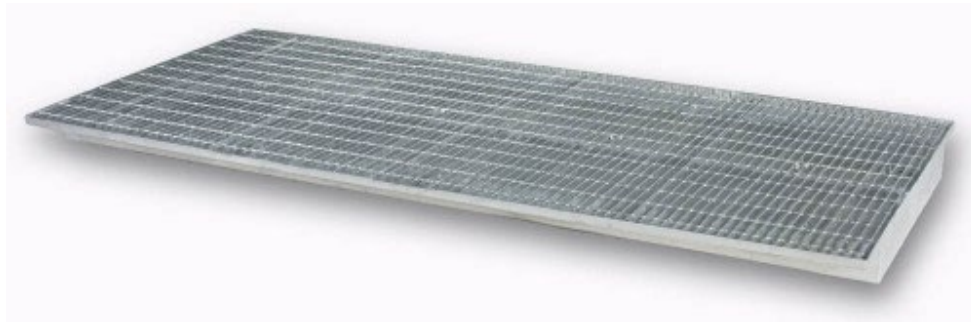


Steel Pallet Rack Sump Inserts, Blue
SKUs# 9140-BU, 9150-BU, 9160-BU, 9170-BU



All of the convenience you require from racking with the compliance required to avoid spills and fines. This rack sump insert is fabricated from steel, comes in a variety of sizes, and installs quickly.

- Durable steel construction
- Keeps you compliant without interrupting regular workflow

Technical Data					
	U.S. Dimensions	Rack Size	Weight	Spill Capacity	Load Capacity
9140-BU	95x42x5.5"	96x36"	335 lbs.	58 gal.	250 psf
9150-BU	107x42x5.5"	108x36"	392 lbs.	65 gal.	251 psf
9160-BU	95x50x5.5"	96x42"	385 lbs.	70 gal.	252 psf
9170-BU	107x50x5.5"	108x42"	452 lbs.	79 gal.	253 psf
Material	Steel, Galvanized Grating				
Regulations	EPA 40 CFR 264.175, SPCC, UFC and NPDES				